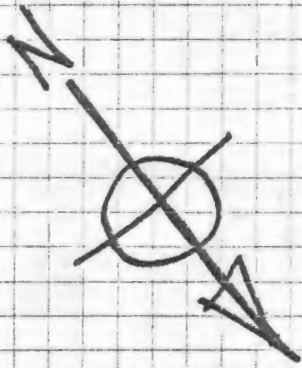
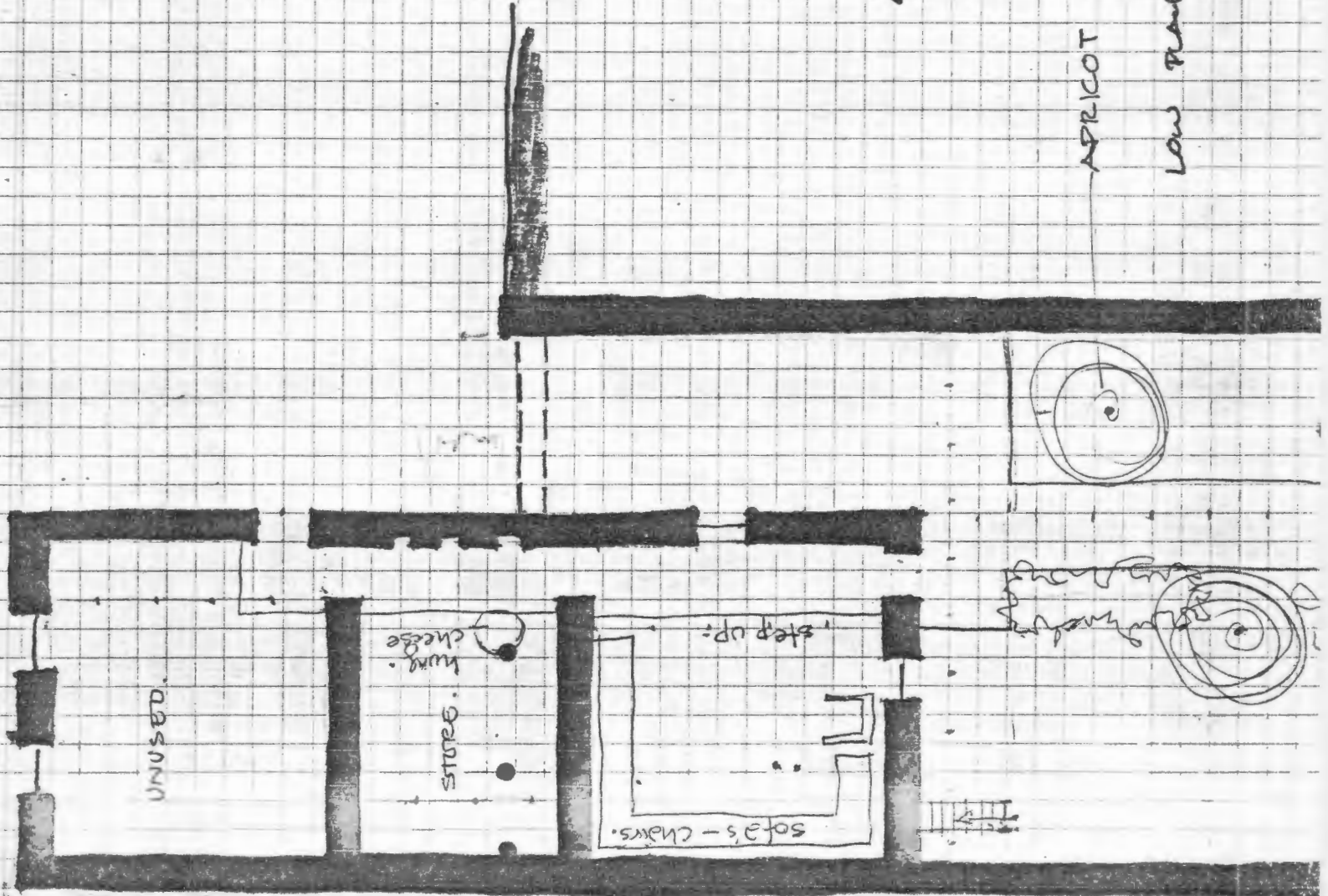


HOUSE AT TALIA VILLAGE
 NEAR BAALBEK, LEBANON.
 SIX OCCUPANTS. ~ FARMER



APRICOT TREES

LOW PLANTING

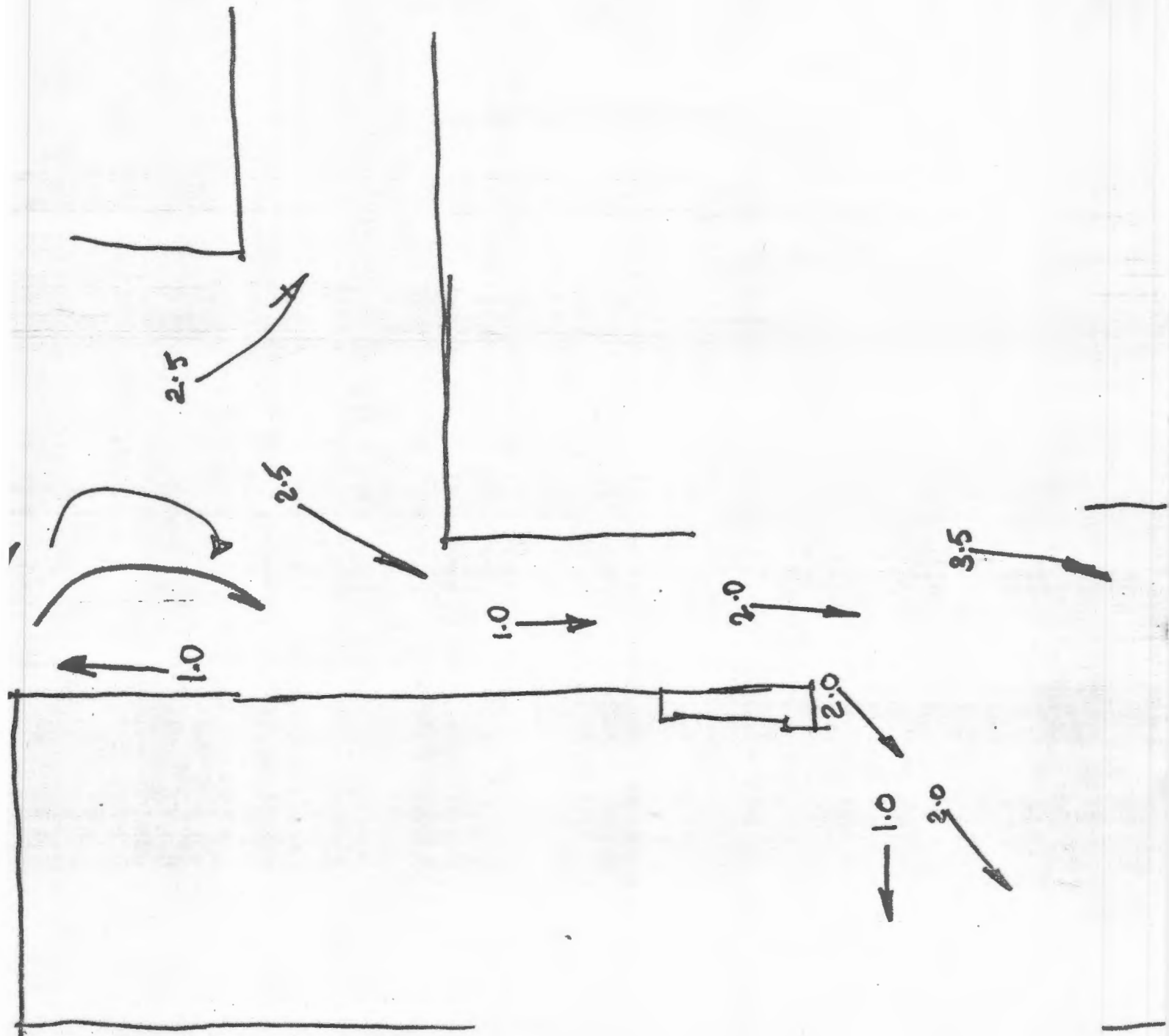


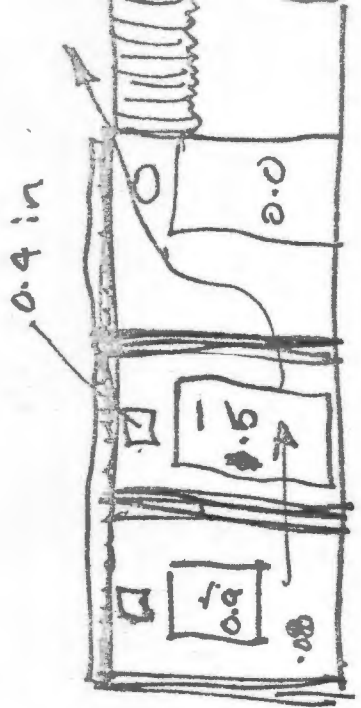
M.B. WALT

St. 3/73

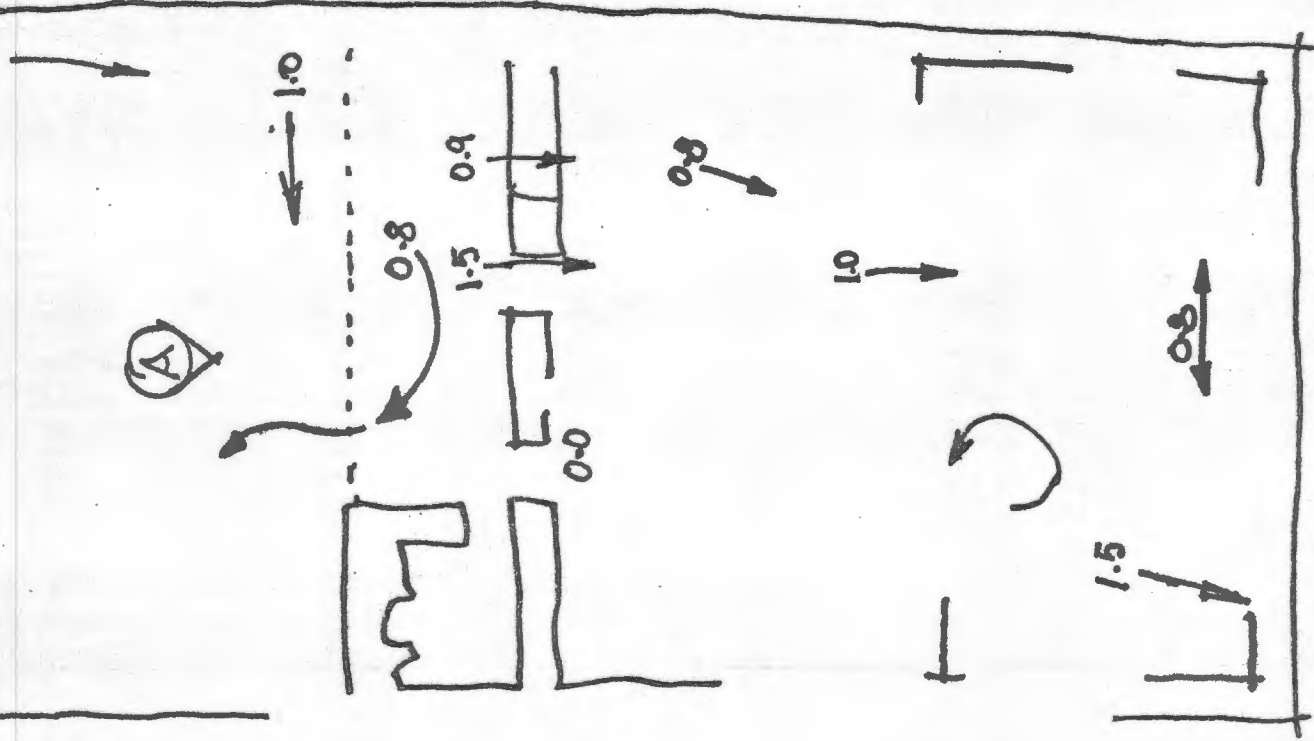
B = 30.5 } Street
B = 22.5 } RH = 25%

B = 80 } Cant yard
B = 23.5 } RH = 35%





Elevation A



door way
upper out
lower in

House in Talia Villiage Lebanon.

Occupants - 6 persons

Profession - farmer

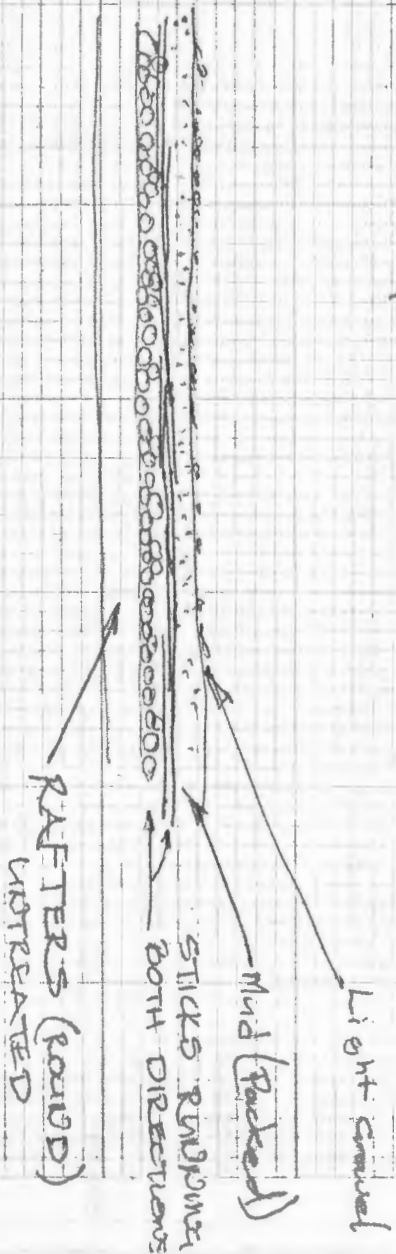
Walls - Mud Brick &

Packed Mud & straw

Lined with 1 layer of cement
block in back courtyard to
protect wall from the rain.

Tin Lean-to W.C.

ROOF = FLAT



ROOF IS ROLLED WITH HEAVY ROLLER
AFTER EACH ROLL.

NO WINDTEL SPOUS IS KEPT OFF ROOF WITH
PUSH SHOVEL.

LADDERS CONTINUALLY AGAINST ROOF FOR
MAINTENANCE.

ROOF STOP TO ONE DRAINAGE SPOUT.